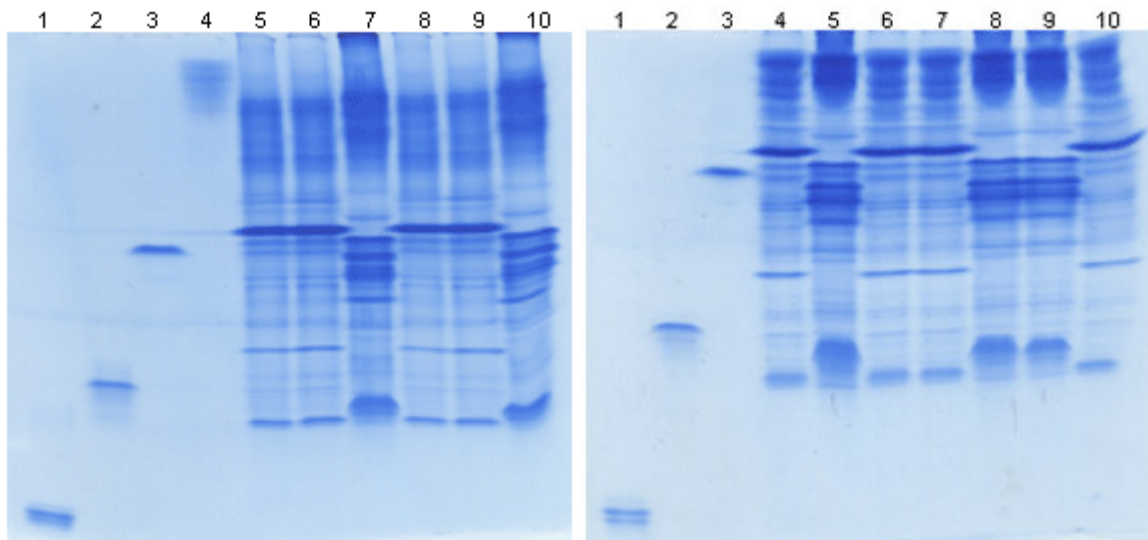


## Ez Way™ IEF-PAG SYSTEM

### SPECIFICATION

- Improved Isoelectric focusing gel for pI determination
- Useful tool for 2-Dimensional separation
- 2 Separation range :
  - EzWay™ IEF-PAG PH3-10 : 3.5-8.5 PI
  - EzWay™ IEF-PAG PH3-7 : 3.5-7.0 PI



**pH 3-10 IEF-PAGE Gel**

**pH 3-7 IEF-PAGE Gel**

Lane 1 : pI 3.6  
 Lane 2 : pI 5.1  
 Lane 3: pI 6.6  
 Lane 4: pI 9.3  
 Lane 5,6,8 and 9: Bovine extract  
 Lane 7,10 : Porcine extract

Lane 1 : pI 3.6  
 Lane 2 : pI 5.1  
 Lane 3: pI 6.6  
 Lane 4,6,7 and 10 : Bovine extract  
 Lane 5,8 and 9 : Porcine extract

### GEL SPECIFICATION

<b>Gel Matrix</b>	Acrylamide with ampolyte
<b>Gel Size</b>	8 x 8 cm
<b>Gel Thickness</b>	1.0 mm
<b>Cassette Size</b>	10 x 10 cm

**ORDERING INFORMATION**

Cat. No.	Product
<b>KG0307</b>	<b>EzWay™ IEF-PAG, PH3-7, 1.0mm, 10well, 10/PK</b>
KG0310	EzWay™ IEF-PAG, PH3-10, 1.0mm, 10well, 10/PK
KIA007	IEF Anode Buffer PH3-7 (50x), 100ml
KIA010	IEF Anode Buffer PH3-10 (50x), 100ml
KIC007	IEF Cathode Buffer, PH3-7 (10x), 200ml
KIC010	IEF Cathode Buffer, PH3-10 (10x), 200ml
KIS007	IEF Sample Buffer, PH3-7 (2x), 25ml
KIS010	IEF Sample Buffer, PH3-10 (2x), 25ml

Disclaimer: EzWay™ is the registered trademark of KOMA Biotech